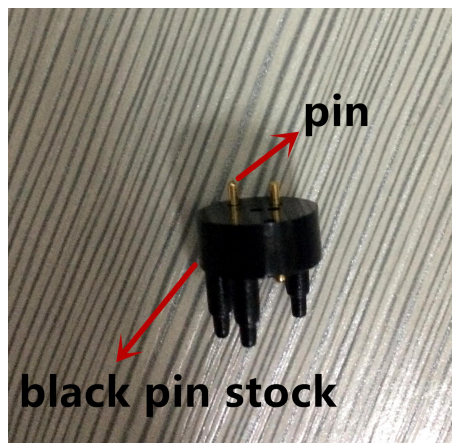
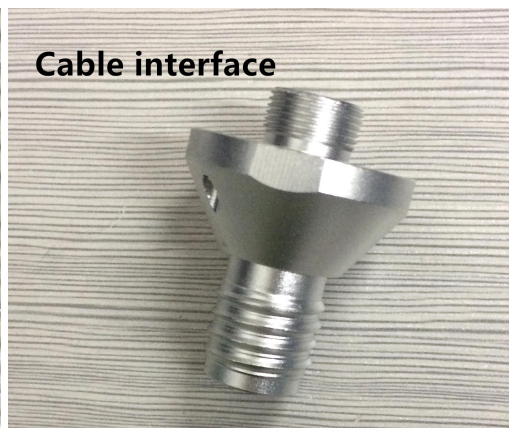


## Instructions about how to repair the PT soft cable port



Part #1



Part #2



### Step:

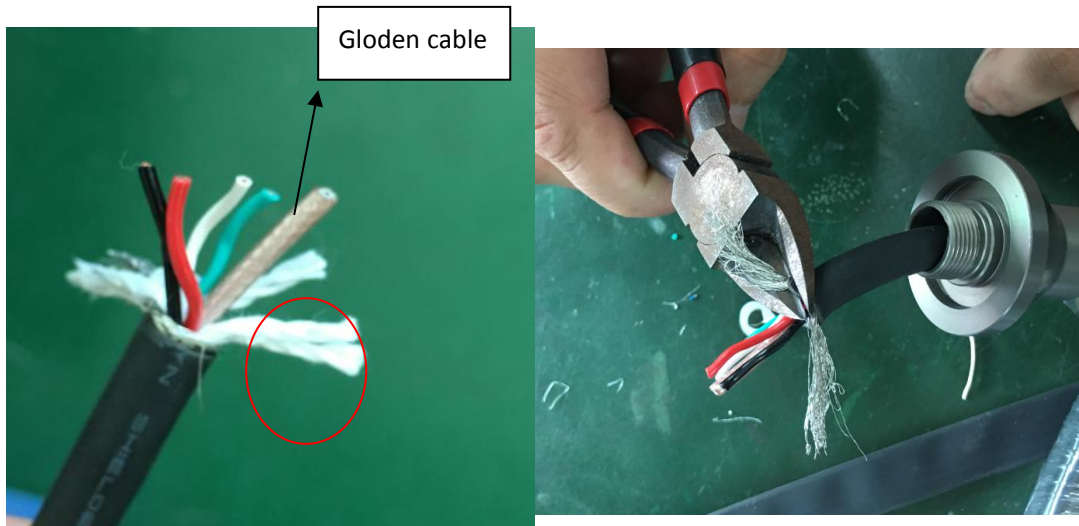
1.Screw out #3, take out the waterproof ring.Cut it short,liked attached picture.Because the ring is a little small .It can't be through out the cable .



2.Through #3,#2 to cable . Liked below picture.



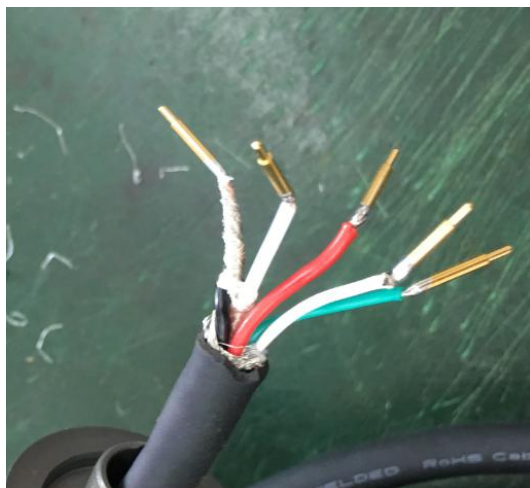
3.Peel the soft cable .Making all steel wire together and then cut out some (About half).  
Cut out the white cotton.



4. Peel the gloden cable and make the steel wire with cable steel wire together. Then making all steel wire with the black cable together.



5. Weld the gloden pin on the cable

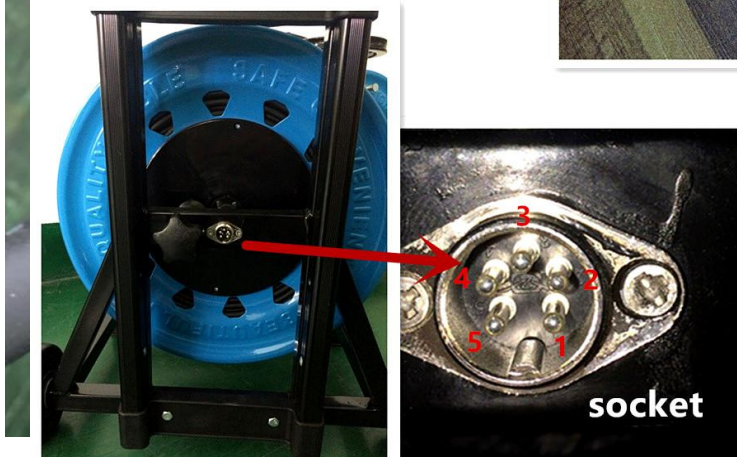


6.Using multimeter to test the cable circuit.And find out the Pin 2. and Pin 5 cable.  
Usually ,the black and steel wire cable as Pin2.

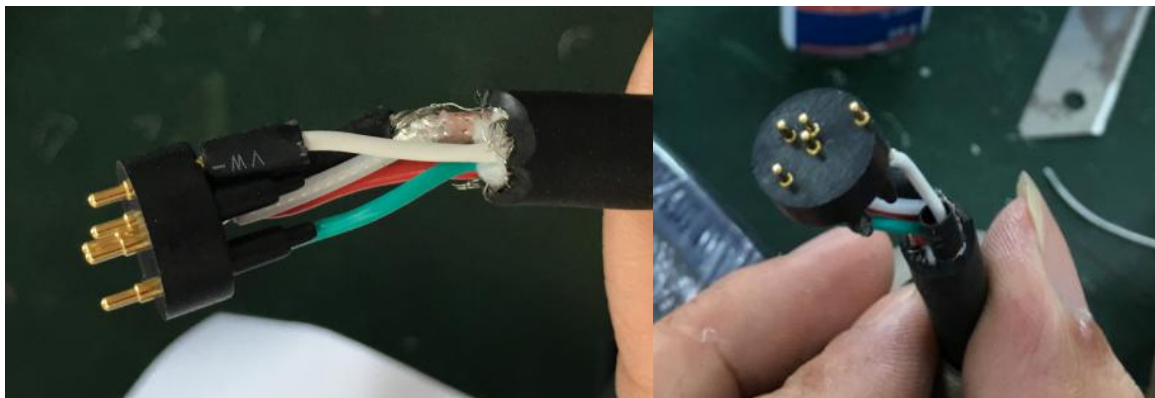


7.Through a black shrinkable tube to Pin2 and Pin5 cable to make it insulation. And then put the golden pin to black base

before you take the pin through the black pin stock, you must use a multimeter to test the cable and socket, to distinguish which wire is No.1,No.2... No.5 in five cables. The pins 1,2,3,4,5 must correspond with the socket 1,2,3,4,5.

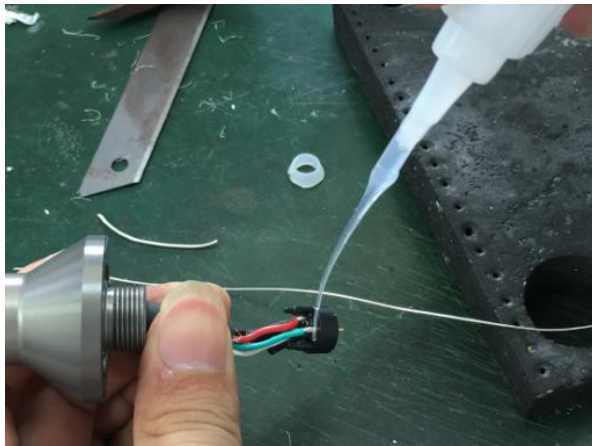


8. When all golden pins are in base.Please check if all pins are the same height.





9.Using 495# glue to fix the golden pin on the base



10. Please check below part if there is too much outside. If yes, please make them inside the



11. Using multimeter to test if the cable circuit is closed or short circuit.(Pin1-1,Pin2-2....)  
If all pins are conneted right. Then please do the next step.

12. 1:1 mixed A glue and B glue.The glue I have sent them to you with the package. And  
using the glue fixed the cable connector part .Seen below picture



13. Fix the base into the connector,press it and let it dry about 5 minutes.



14.Tighten the screw up and the cable connector is fixed well.

